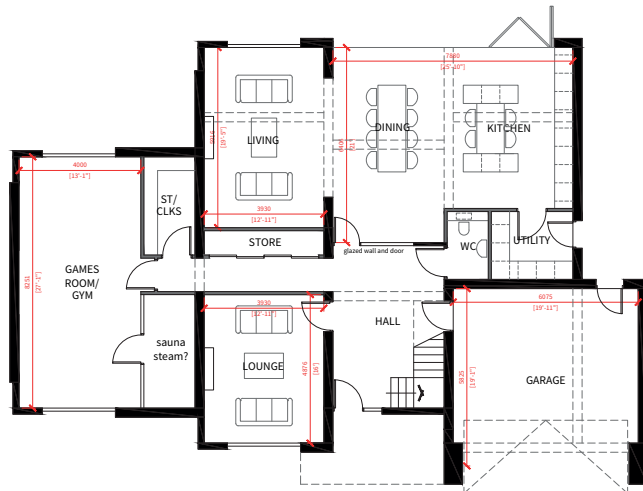
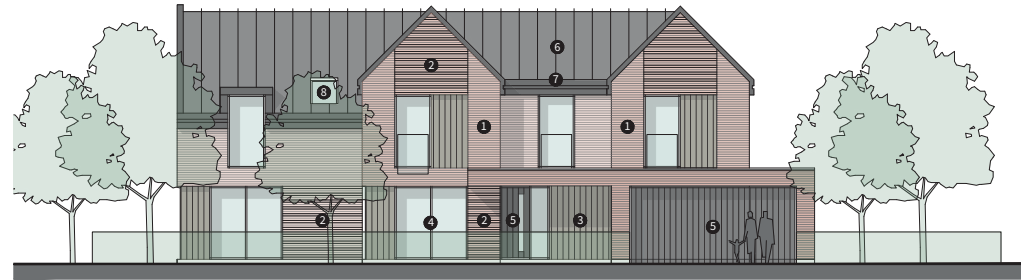


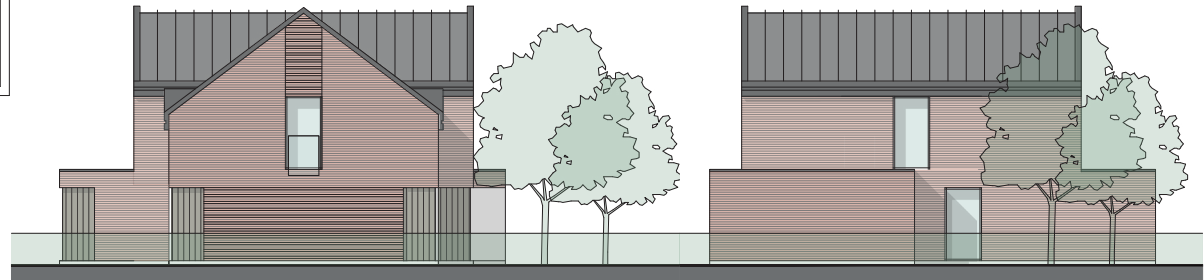
1F First Floor Plan  
1:75 @ a1



GF Ground Floor Plan  
1:75 @ a1

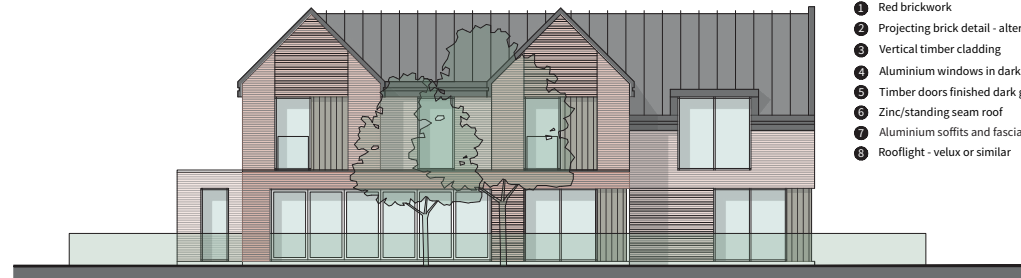


FE Front Elevation  
1:75 @ a1



SE Side Elevation  
1:75 @ a1

SE Side Elevation  
1:75 @ a1



RE Rear Elevation  
1:75 @ a1

**Key to materials**  
subject to approval

- 1 Red brickwork
- 2 Projecting brick detail - alternate courses
- 3 Vertical timber cladding
- 4 Aluminium windows in dark grey
- 5 Timber doors finished dark grey
- 6 Zinc/standing seam roof
- 7 Aluminium soffits and fascias
- 8 Rooflight - velux or similar