



FA_Elevation Materials Key
1:1

MATERIALS KEY

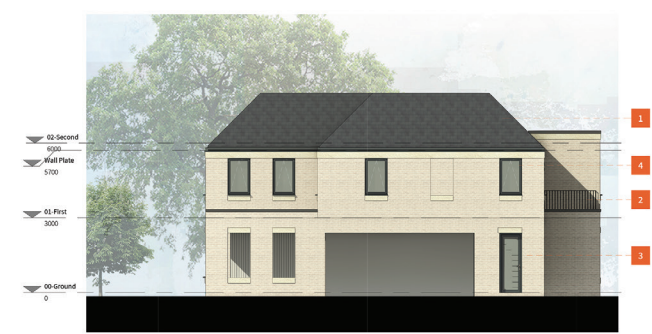
- 1 HARLEY "THURFORD" DARK GREY ROOF TILES
- 2 BLACK METAL RAILING
- 3 PLASTIC BLUFF MULTI-FACING BRICKWORK (STANDARD 37 FETTER BRICK)
- 4 POWDER COATED ALUMINIUM WINDOW/DOOR FRAMES (DARK GREY)
- 5 EXPRESSED STONE LINTELS, SILLS & BANDING
- 6 POWDER COATED ALUMINIUM COPING/FLASHING
- 7 600mm DEEP CANOPY OVER PRINCIPLE ENTRANCE



1 GA_Elevations_North
1:100



4 GA_Elevation_West
1:100



3 GA_Elevations_Rear
1:100



2 GA_Elevations_West
1:100